

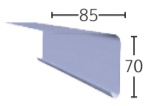
Trim Range

A Trims



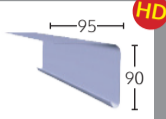
A170 - TRA170

Fascia Trim - Fitted to roof edges to allow drainage.



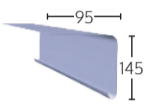
A200 - TRA200

Fascia Trim - Fitted to roof edges to allow drainage into gutter. Compatible with C1, C2, C4 and C9A corner trims.



A250 - TRA250

Fascia Trim - Fitted to roof edges to allow drainage into gutter. Compatible with C1, C2 and C4 corner trims.

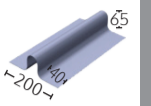


E Trims



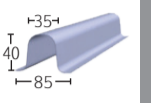
E280 - TRE280

Raised Ridge Roll - Used as an expansion joint on larger roofs and to create rolls on any ridge details. Compatible with C5, C8B, C9A and C11D preformed closures.



ER35/40 - TRER35/40

Simulated Lead Rolled Joint (Rolled Rib) - Simulates the appearance of raised rolled lead joints. Compatible with C6 preformed closures.



F Trims



F150/300/600/900 - TRF150/TRF300/TRF600/TRF900

Flat Flashing - Flat section for use as continuous flashing under slates at a roof junction. It can also be used as a gutter lining. Min width: 150 - Max width: 900



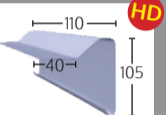
TRIM	LENGTH	PRODUCT CODE
F150	150MM WIDE - 20M	TRF150
F150	150MM WIDTH - 10M	TRF15010MTR
F300	300MM WIDTH - 20M	TRF300
F300	300MM WIDTH - 10M	TRF30010MTR
F300	300MM WIDTH - 5M	TRF3005MTR
F300	300MM WIDTH - 3M	TRF3003MTR
F600	600MM WIDTH - 20M	TRF600
F600	600MM WIDTH - 10M	TRF60010MTR
F600	600MM WIDTH - 5M	TRF6005MTR
F900	900MM WIDTH - 20M	TRF900
F900	900MM WIDTH - 10M	TRF90010MTR

B Trims



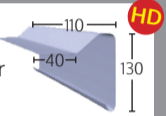
B230 - TRB230

Raised Edge Trim - Flat roof edge detail to prevent water run off. Drip matches A170.



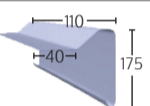
B260 - TRB260

Raised Edge Trim - Flat roof edge detail to prevent water run off. Compatible with C1, C2, C4 and C8B corner trims.



B300 - TRB300

Deep fascia raised edge trim. Ideal for a warm roof specification. Compatible with A250 trim.

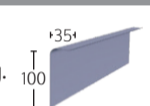


C Trims*



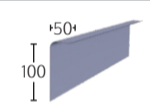
C100 - TRC100

Simulated Lead Flashing - Replaces traditional lead flashing. Dark grey, non adhesive finish to simulate the appearance of lead. Compatible with C7Int and C7Ext corner trims.



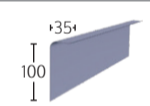
C100L - TRC100L

Simulated Lead Flashing Long Leg - As C100 with deep wall penetration. Compatible with C7Int and C7Ext corner trims.



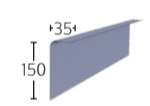
C100MT - TRC100MT

Simulated Lead Flashing with Moisture Trap - As C100 with integral self-securing moisture trap. Compatible with C7Int and C7Ext corner trims.



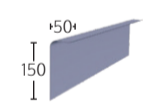
C150 - TRC150

Simulated Lead Flashing - Replaces traditional lead flashing. Dark grey, non adhesive finish to simulate the appearance of lead. Compatible with C7Int and C7Ext corner trims.



C150L - TRC150L

Simulated Lead Flashing Long Leg - As C150 with deep wall penetration. Compatible with C7Int and C7Ext corner trims.



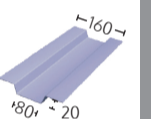
*Do not topcoat

G Trims



G180 - TRG180

Gully Trim - Used on larger roofs to aid drainage.

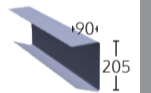


S Trims



S500 - TRS500

Soffit Trim - To fully encapsulate a concrete edge or similar roof edge detail.

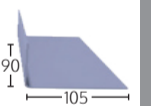


AT Trims



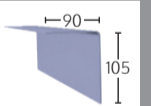
AT195Int - TRAT195IT

Internal Angle Trim - High adhesion surface on inner face for forming upstands, gutter floors etc.



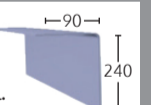
AT195Ext - TRAT195E

External Angle Trim - High adhesion finish on outer face for step details, cover flashings etc.



AT300Ext - TRAT300EXT

External Angle Trim - Extra-long external angle trim for encapsulating block/step features including parapet wall detail.

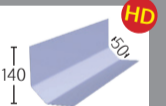


D Trims



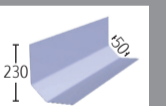
D260 - TRD260

Wall Fillet - Asymmetric fillet trim for use against abutting walls. Also provides expansion. Compatible with C2, C3Int and C3Ext corner trims and C11D.



D300 - TRD300

Long Flange Wall Fillet - Extra wide asymmetric fillet for use against abutting walls. Also provides expansion.

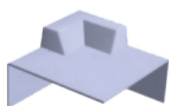


HD Heavy Duty Trim available

Pre-formed Corners

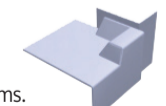
C1 - C1

Universal External Corner - For use with all A and B trims to form a left or right hand corner.



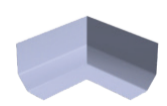
C2 - C2L/C2R

Fillet to Trim - For use where a flat roof meets an abutting wall. Compatible with all A, B and D trims. Right and left corners available.



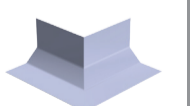
C3 (Int) - C3INT

Internal Fillet Corner - Used as a pre-formed internal corner for all D-trims. Avoids mitring in situ.



C3 (Ext) - C3IEXT

External Fillet Corner - Used as a pre-formed external corner for all D trims. Avoids mitring in situ.



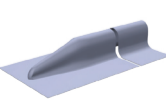
C4 - C4

Universal Internal Corner - For use with A200 and B260 trims to form a left or right hand corner.



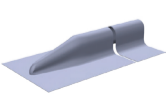
C5 - C5

Roof Ridge Closure - Pre-formed closure for use with E280 profiles.



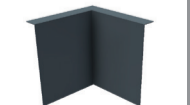
C6 (ER35/40) - C6

Rolled Rib Closure - Pre-formed closure trim for use with ER35/40 profiles.



C7 (Int) - C7INT

Simulated Lead Flashing Corner - Pre-formed internal corner for C100 and C150 type flashings.



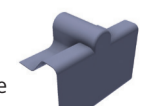
C7 (Ext) - C7EXT

Simulated Lead Flashing Corner - Pre-formed external corner for C100 and C150 type flashings.



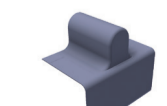
C8B - C8B

Expansion Closure - For use on expansion joints. Compatible with E280 and all B trims.



C9A - C9A

Expansion Closure - For use on expansion joints. Compatible with E280 and A200.



C11D - C11D

Expansion Closure - For use on expansion joints. Compatible with E280 and all D trims.

